

**Arable
Crops**



**tractor
-mounted**



800l

1000l

1200l

BERTHOUD®

Forward together

HERMES

A new era

The HERMES tractor-mounted sprayer available in 3 capacities (800, 1000, 1200l) has a functional design which makes it very compact but also gives it notable technical evolutions on this type of equipment, including the new EcoMatic® pump sub-unit patented Berthoud and the new ALSR rear-folding boom of 15 to 18 m with Axial suspension



Table of contents

- p. 2 HERMES
- p. 3 Chassis: Simple and compact
- p. 4-5 EcoMatic: Implementation that makes the difference
- p. 6 ALSR boom: A compact structure associated with enviable stability
- p. 7 Precise application

Chassis: Simple and compact

A light chassis but very strong

3-point hitch as standard
Optional automatic hitch on the 3rd point

Chassis made of HLE steel protected by Berthoud UHR paint

Retractable mixing hopper

With a capacity of 25l it is equipped with graduation and a remote control to control suction. It includes access steps to the manhole

Main tank

Main tank made of high-density polyethylene of 800/1000/1200 litres + 5%.

EcoMatic: Always simpler!

Simplified EcoMatic implementation with GAMA 105 or 130l/min pump

Triple filtration

- > Upon filling (sieve with mesh of 8/10)
- > Upon suction (vannofilter with mesh of 6/10)
- > Upon discharge (filter 1/4 turn with mesh of 4/10).

Maximum compactness

- > The centre of gravity placed far forward on the equipment, the hitch ideally integrated in the tank.
- > the minimum overhang providing greater stability and manoeuvrability.

External direct-read gauge or optional ribbon gauge

Optimal distribution of weight on the chassis

- > Diamond-shaped tank made of high-density polyethylene, optimising drainage of the tank
- > Limited tank height and design bringing the weight towards the front of the chassis
- > Sump with suction by lateral pipe = no "siphon" effect = limited bottom residue
- > 120 L rinsing tank placed on the right side of the chassis, filled either by the opening in the tank or by quick connection at the level of the control station. The latter has a box for personal protective equipment

EcoMatic®

Most manufacturers now endeavour to meet the challenge of maximum reduction of residual volumes at the end of spraying. Various technological approaches are being developed while being careful not to worsen the ergonomics of this space, which is strategic for the use of the sprayer and the working speed.

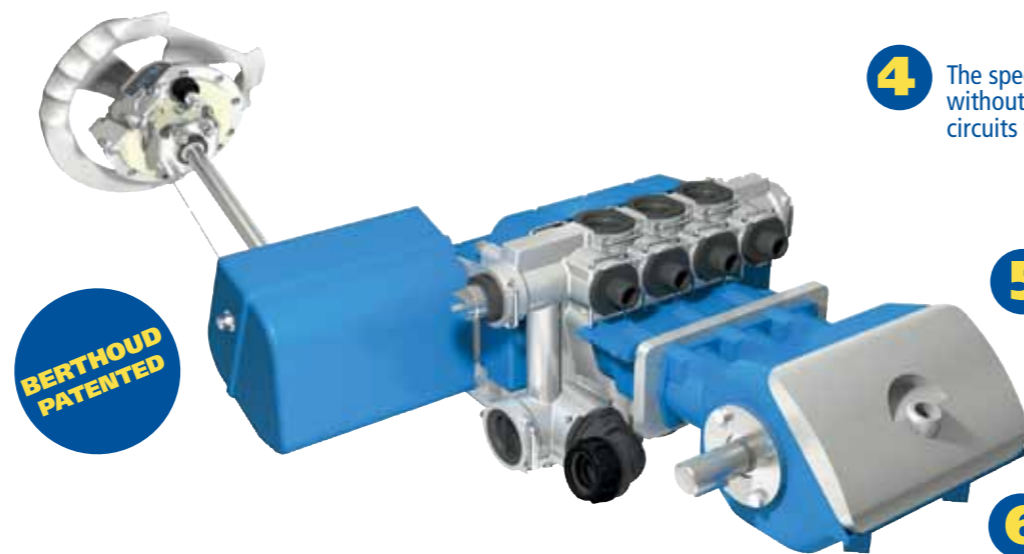
The innovation on the EcoMatic lies in the assembly of function valves directly on the body of the sprayer pump and the single control.

Implementation that makes the difference

Control station: An ergonomic area

The EcoMatic® currently distinguishes itself from the existing solutions on the market through 6 points

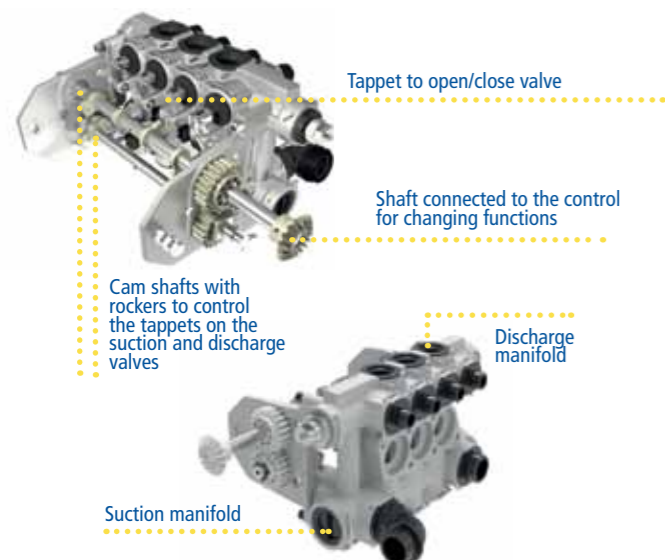
- 1** The set of function valves are attached to the body of the pump, which eliminates all of the connection pipes from the valves to the pump to **limit residual volumes**.
- 2** The valves are made of aluminium for **longer life**.
- 3** A single command controls all of the functions for greater **simplicity and usage comfort**.



- 4** The specific sequential rinsing function simply and without risk of error sequences the rinsing of all of the circuits to **limit the risks of phytotoxicity**.
- 5** EcoMatic is associated with the **GAMA pump 105 and 130l/min**. Known for its sturdiness and long service life, it has 2 major advantages:
 - > Excellent volume measurement, which guarantees the precision of regulation.
 - > Low maintenance
- 6** Accessible and simple design to **optimise after-sales service**.



The valve block



The valve block: Practical example

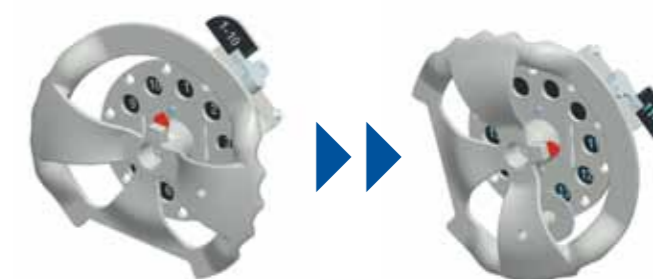


The control



It is used to control the functions of the sprayer. A central pointer indicates the chosen function. The number corresponds to a function identified on the BERLOGIC panel (1 number = 1 function explained) – facilitates operational use

Sequential rinsing



Innovation on the EcoMatic®, when the operator changes products, this function can rinse all of the circuits of the sprayer without missing any, via a preestablished sequence of functions.

Intuitive transition to the additional sequential rinsing functions enables the operator to easily pass in front of each function in order to clean it.

ALSR boom

A compact structure associated with enviable stability

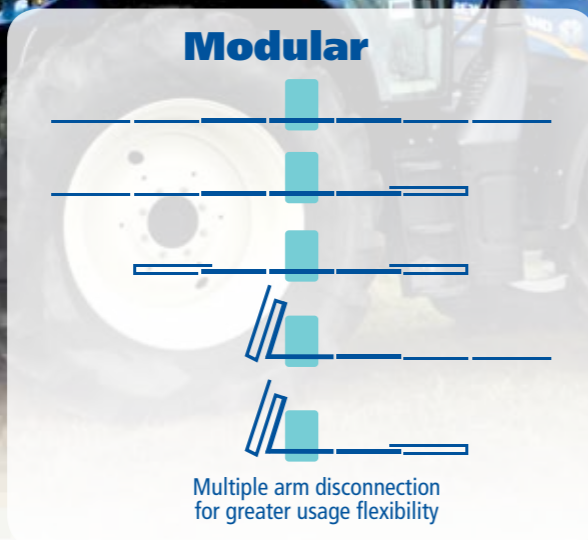
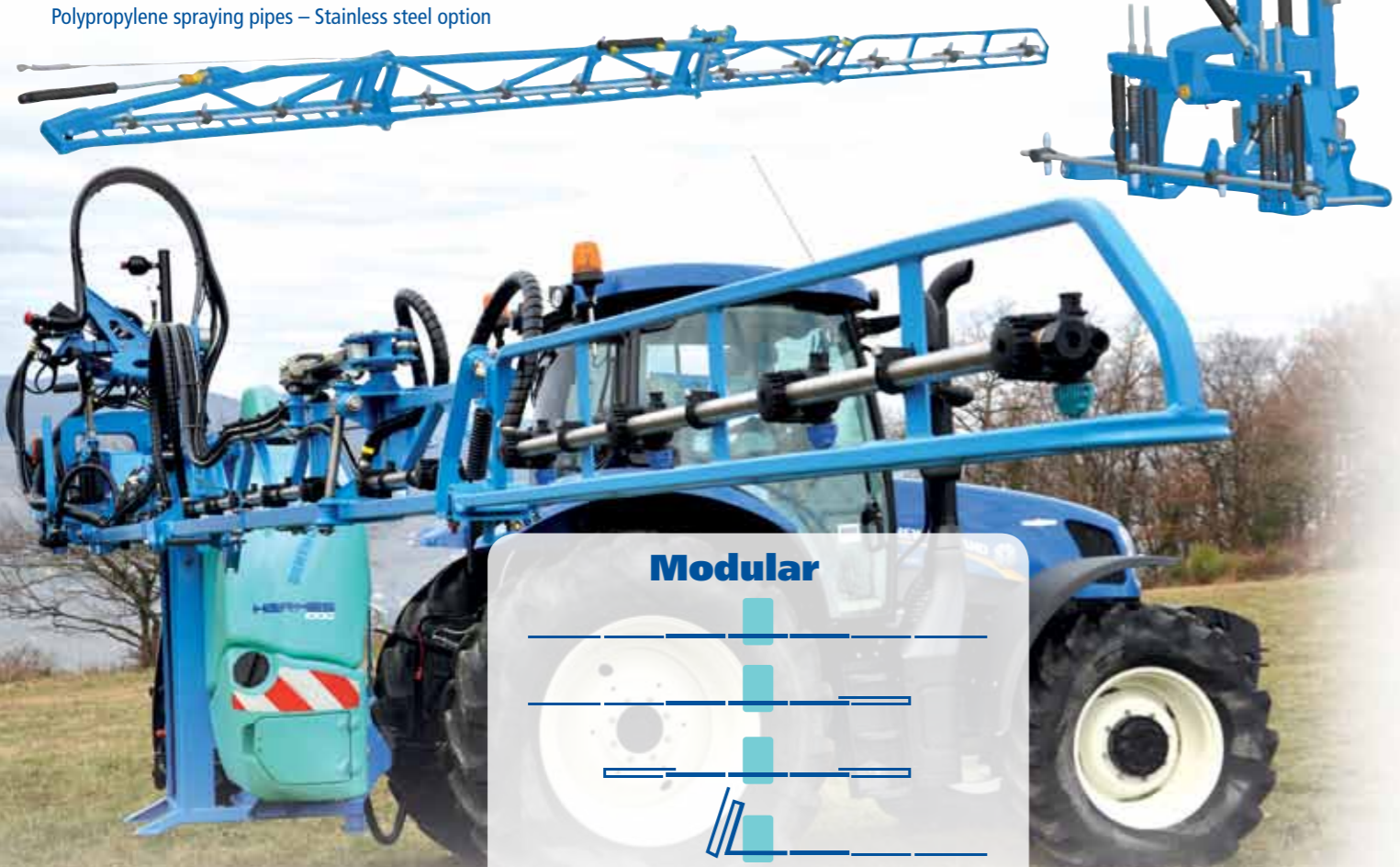
Available in 15, 16 and 18 m

L-shaped arm structure

In order to optimise the weight/rigidity relationship.
Polypropylene spraying pipes – Stainless steel option

AXIAL suspension

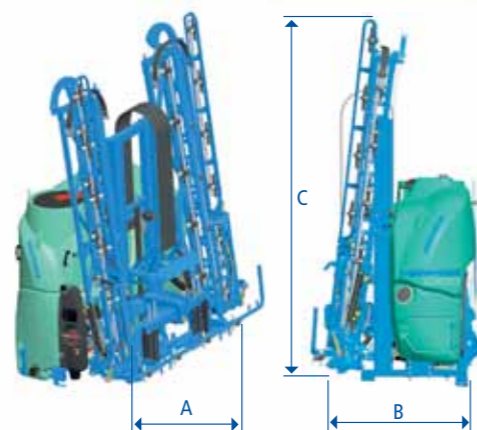
In its design, the ALSR boom includes AXIAL suspension as standard. A real BERTHOUD advantage, it provides legendary stability on flat land, on slopes and bends.



Hydraulic controls

Hydraulic controls by tractor distributors or Electro-Hydraulic Selector (SEH) according to the desired functionalities.

- > Integral unfolding standard
- > Slope control and disconnection option



Dimensions

Dimensions (m)

	A	B	C
Hermes 800l 15m	2.42	1.5	2.65
Hermes 1200l 18m	2.42	1.5	3.15

Weight (kg)

Hermes 800l 15m	900
Hermes 1200l 18m	940

Precise application

The right dose at the right time in the right place, that is the aim of a treatment. Precise regulation plays a crucial role at this level. It is also decisive for reducing residual volumes at the end of application. Three models of regulation are offered on the Hermès: **Autoregulator, EC Control and EC Tronic Eco**



THE AUTOREGULATOR

AUTOREGULATOR is a DPM (Flow Proportional to Engine speed) regulation unit. This system allows you to maintain a constant volume/ha in a selected gear ratio; it is very precise for speed variations of up to 20%.

- > Simple and economic solution
- > EC CONTROL option for a permanent display of the 4 main spraying parameters (vol/ha applied, forward speed, litres sprayed, calculated pressure)

EC TRONIC Eco electronic regulation via pressure sensor

the monitor can:

- > Control spraying and the boom
- > Adjust the volume/ha
- > Permanently display the 4 main spraying parameters (Volume/ha, speed, litres sprayed, pressure measured)



Regulation via pressure sensor offers several advantages:

- > Improved accuracy (pressure measurement close to the nozzle and more efficient on smaller volumes)
- > Not affected by clogging or blocking
- > No calibrated returns
- > Low maintenance
- > Closing of nozzle/nozzle requires no change in setting

HERMES 100% BERTHOUD

BERTHOUD, a success story that started in 1895 on the initiative of Paul **BERTHOUD**. In 1987, the brand joined the Exel Industries group, the world leader in spraying techniques present in the agricultural, industrial and general public fields. **BERTHOUD** generates its turnover through its equipment for Row crops, Vines and Trees.



Brand advantage

BERTHOUD meets all your requirements: mixed-farming breeding, cereal crops, large farms, agricultural contractors (ETA), Cooperatives for the use of agricultural equipment (CUMA), etc. From the simplest machine (mechanical DPA) to **BERTHOUD SOLUTIONS**, (precision agriculture), all of them enjoy the best resale value on the second-hand market.



Innovation advantage

BERTHOUD designs 100% of its sprayers and over 10% of its employees work on Research and Development. **BERTHOUD** develops its own concepts and holds many patents: **ACTIFLEX**, etc.



Network advantage

A special partnership of over 50 years with a network that provides a relay close to your location. 350 dealership technicians are trained every year in our Training Centre.



Service advantage

Delivery of spare parts in less than 24 hours, service level of close to 99% strengthened by the high availability of our teams on the road and the performance of our After Sales hot line.



85916 AE 02/18

BERTHOUD[®]
Forward together

BERTHOUD agricole – 69220 BELLEVILLE
Tel: +33 (0)4 74 06 50 50 - Fax: +33 (0)4 74 06 50 77 - www.berthoud.com

S.A.S. with a capital of €1,155,000 / R.C.S. Villefranche B 515 720 829 / APE 2830-z